



Navyuvak Shikshan Prasarak Mandal Chapolis

Sanjeevane Mahavidyalaya, Chapoli Tq. Chakur Dist. Latur

ILMS software for automation (web based)	E - LIBRARY MANAGER
Status of automation	Partially automated
Version of ILMS software	Library Manager Version 3.0.0 Developed & powered by Biyani Technology, Kolhapur.
Year of Automation	2014-2015
OPAC	OPAC is available for users
Electronic Resource Management package for e-journals	available through UGC INFLIBNET N-LIST
In-house/remote access to e-publications	available through College Teachers Lecture Videos on YouTube channel available
Total number of computers for public access	one computer for OPAC, three computers are for public access and one computer as server for library automation
Total number of printers and Scanners for public access	one scanner and one printer
Internet bandwidth/speed	30-50 mbps

Library Management System (Web Based):

It is integrated, multi-user, multi-lingual package which computerizes all the in-house operation of library. This software is used to operate and maintains library's reading materials in the accession registers as well as records. It includes many features such as online public Access Catalogue (OPAC), Book Management, Accessioning, Membership, Circulation, reports & Administration. This package is user friendly and can be handled/ operated by the staff vis-à-vis the beneficiaries of the system. Most of the library are done through web-based Library Management System.

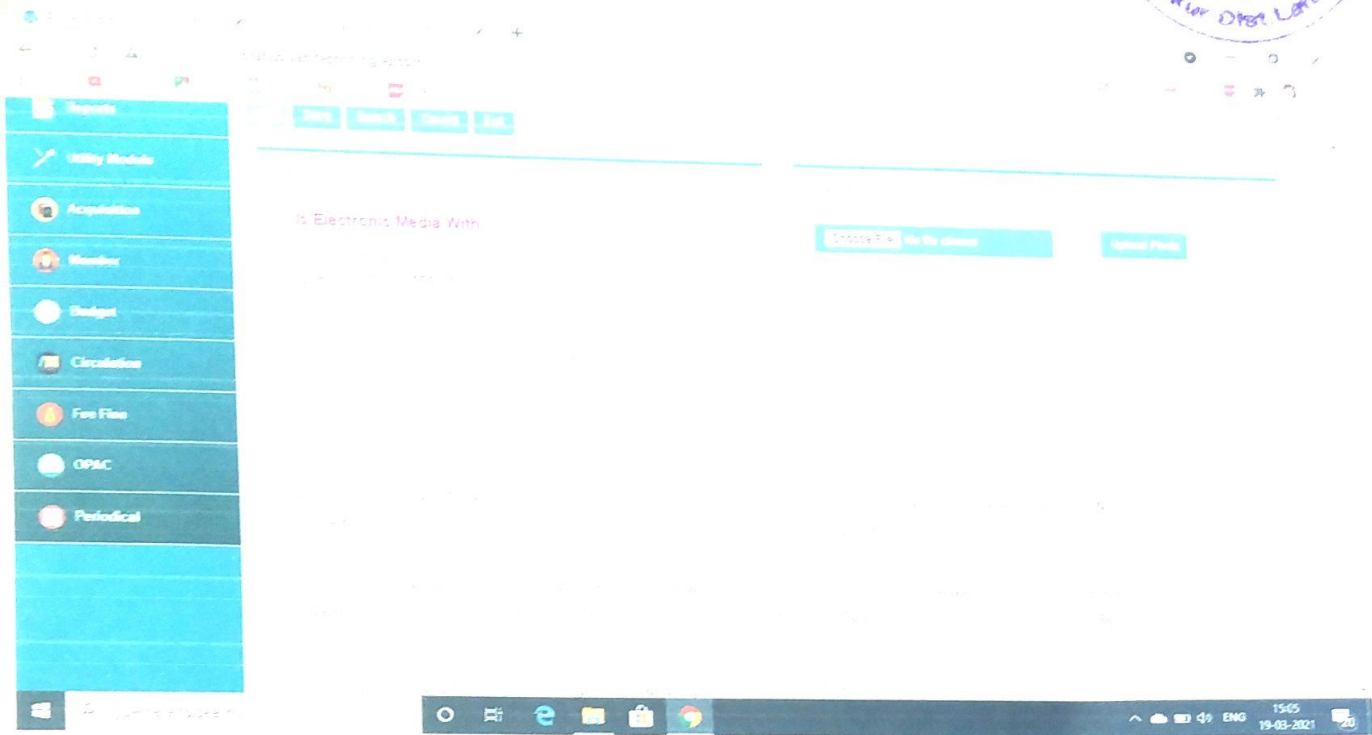
Library Automation: Presently Library is partially automated.

OPAC (Online Public Access Catalogue):

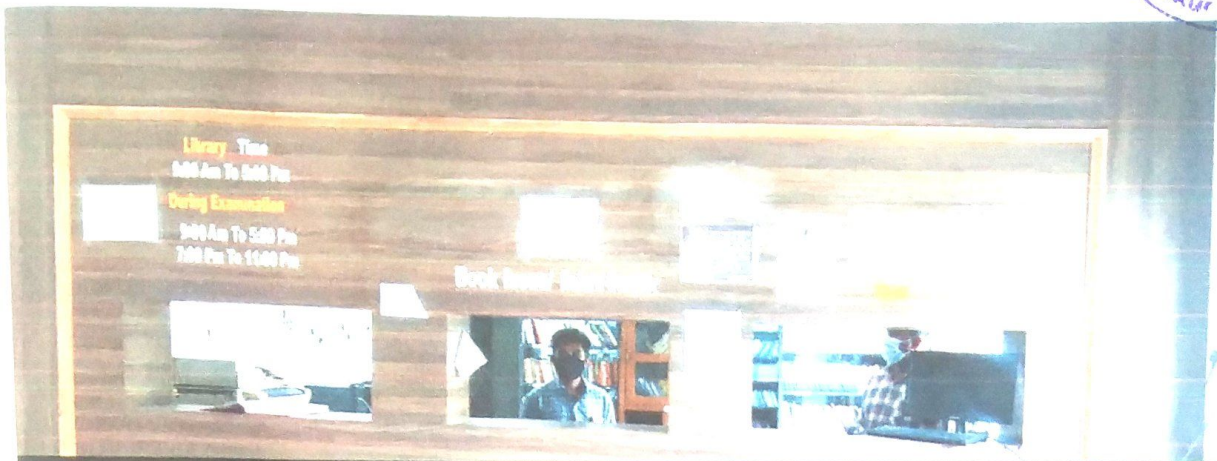
It is highly versatile and user-friendly software in operation used for simple and advanced search for books available in the library. The bibliographic information about the collection is made available through library OPAC system. The books can be searched on the basis of various criteria like: title, author, subject, publishers, year of publication with the exact details and status of the book present in the library.

Principal

Sanjeevane Mahavidyalaya, Chapoli
Tq. Chakur Dist. Latur



Principal
Santeevane Mahavidyalaya, Chapoli
Tal. Chankar Dist. Latur



Latur-Nanded Hwy, Chapoli, Maharashtra 413513, India

Latitude

18.574479°

Longitude

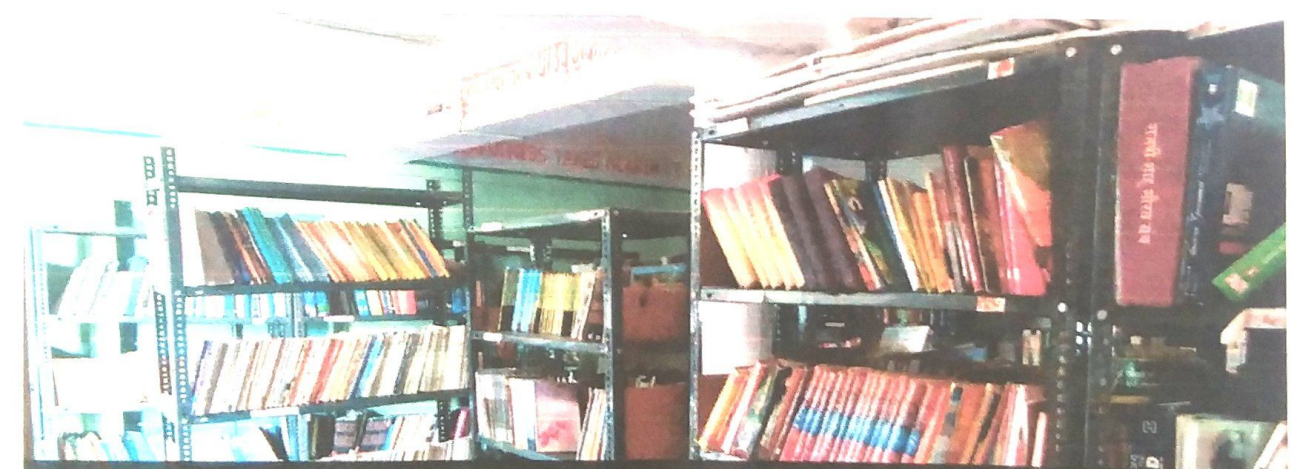
76.9155385°

Local 10:38:23 AM

GMT 05:08:23 AM

Altitude 516.2 meters

Friday, 03-19-2021



Latur-Nanded Hwy, Chapoli, Maharashtra 413513, India

Latitude

18.57454131°

Longitude

76.91563398°

Local 10:40:08 AM

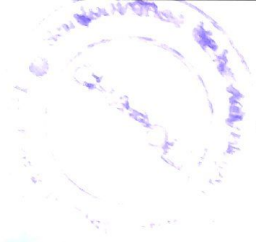
GMT 05:10:08 AM

Altitude 507.95 meters

Friday, 03-19-2021

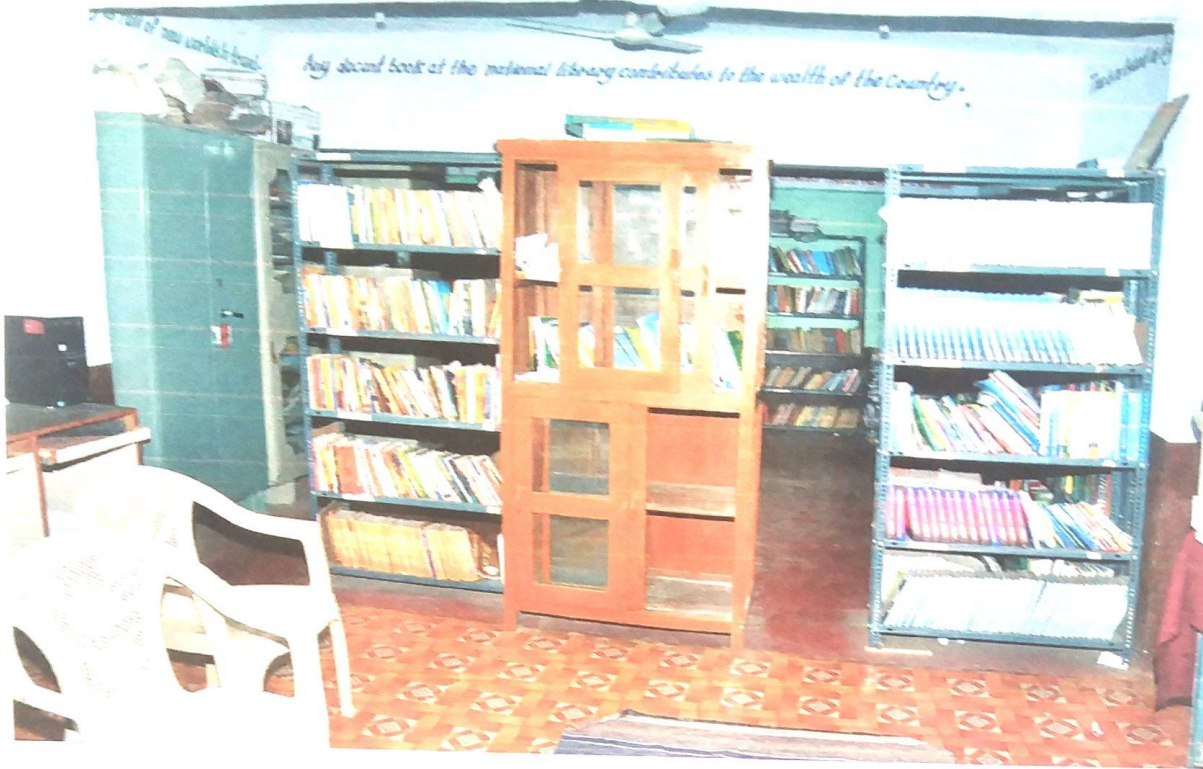
Principal

Sanjeevrao Mahavidyalaya, Chapoli



The only thing that you absolutely must

Any social book at the national library contributes to the wealth of the Country.



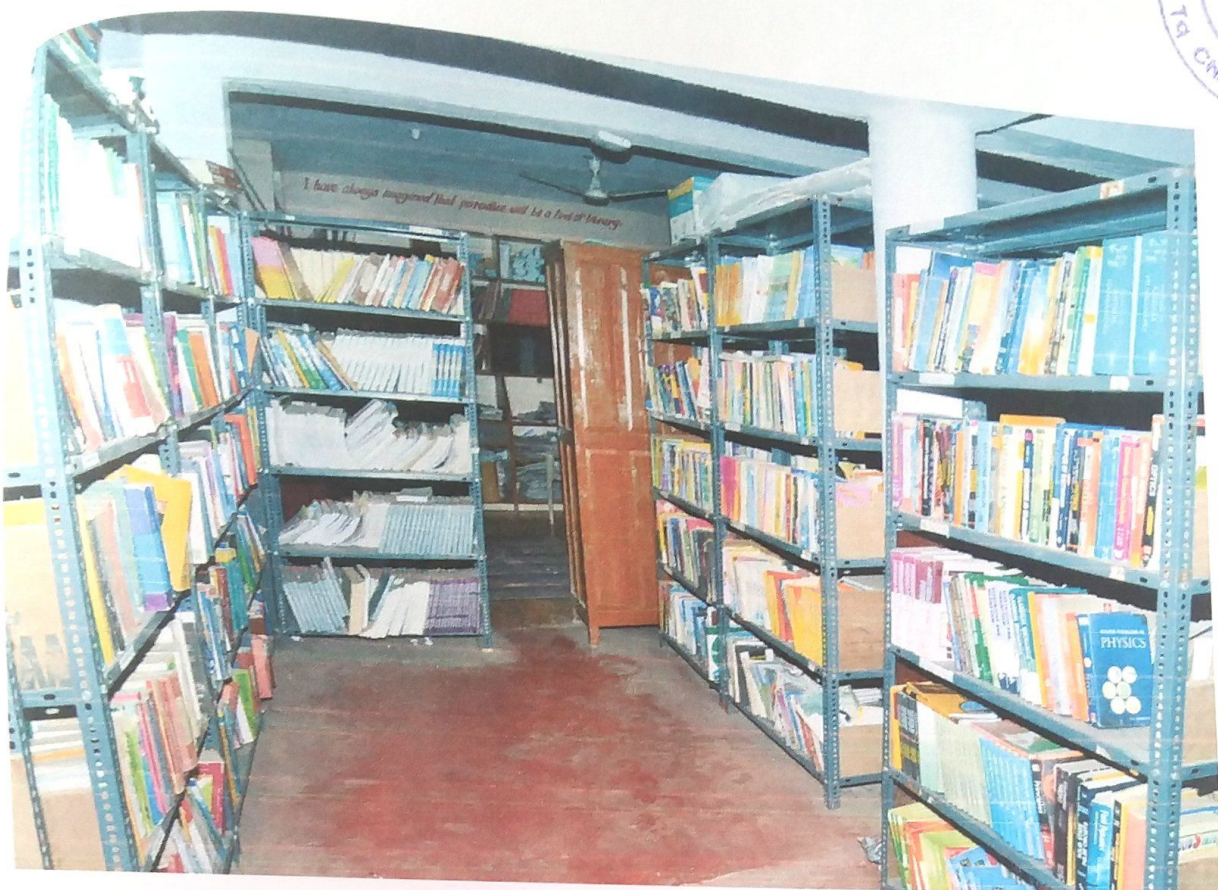
Principal
Sanjeevane Mahavidyalaya, Chapoli
Tq. Chakur Dist. Latur



The only thing that you assuredly...



Principal
Sanjeevane Mahavidyalaya, Chapoli
Tq. Chakur Dist. Latur



A handwritten signature in blue ink, appearing to read "Ananta".

Principal
Sanjeevane Mahavidyalaya, Chapoli
Tq. Chakur Dist. Latur